

L.O.G. HEIGL
FERGUSON ERSATZTEILE

PRODUCT NEWS

CONTACT US TO PLACE YOUR ORDER

t. 094 223 123 e. info@ferguson-shop.eu

ferguson-shop.eu



DELUXE CLOTH AIR SEAT
55792

- 175mm fore/aft adjustment
- 35–170° backrest angle
- 50–130kg weight adjustment
- Durable fabric
- Seatbelt included



DELUXE MECHANICAL SEAT
53923

- 175mm fore/aft adjustment
- 35–170° backrest angle
- 50–130kg weight adjustment
- 80mm suspension stroke
- 60mm height adjustment
- Durable fabric
- Seatbelt included



LOW BACK SEAT WITH AIR SUSPENSION
55792L



GATOR RIDE ON MOWER SEAT
59769



LOW BACK SEAT WITH MECHANICAL SUSPENSION
53923L

QTP

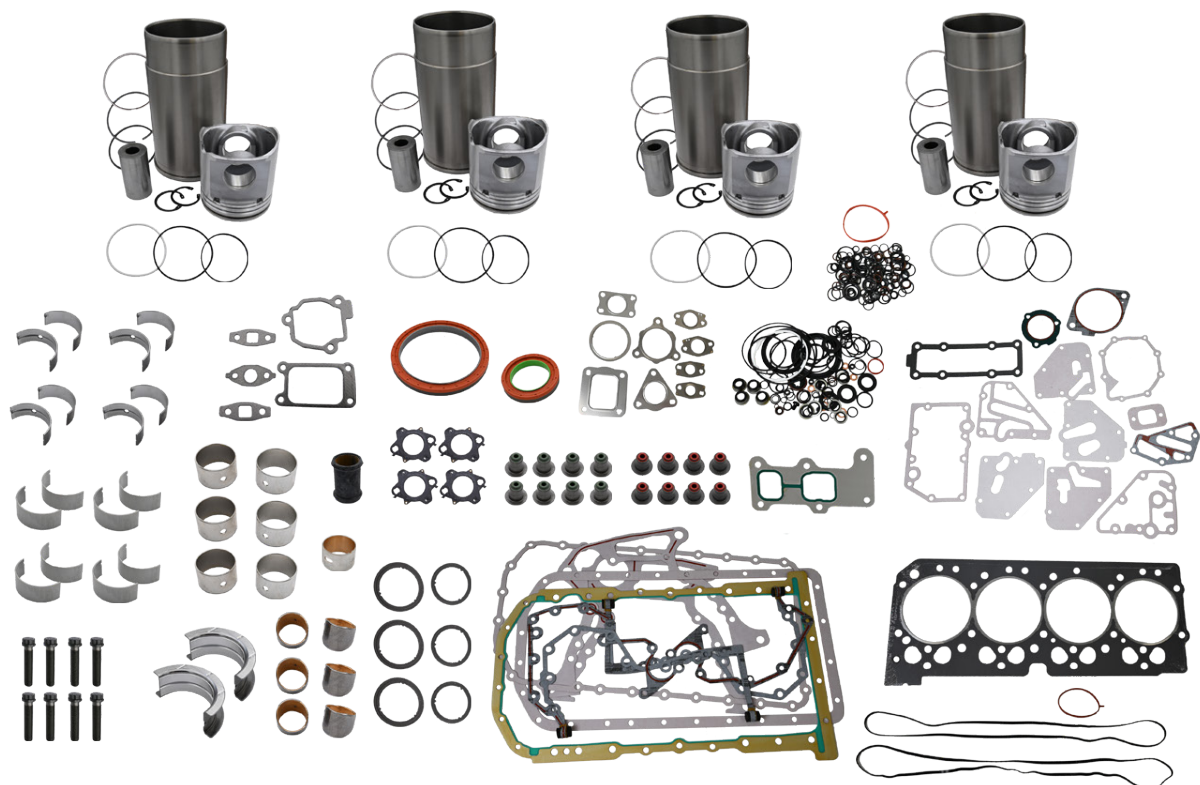
Produced by
Quality Tractor Parts

04/08/25

+
**MORE
INSIDE**

JOHN DEERE POWERTECH 4045 T/H TIER 4 | 4 CYLINDER

500755

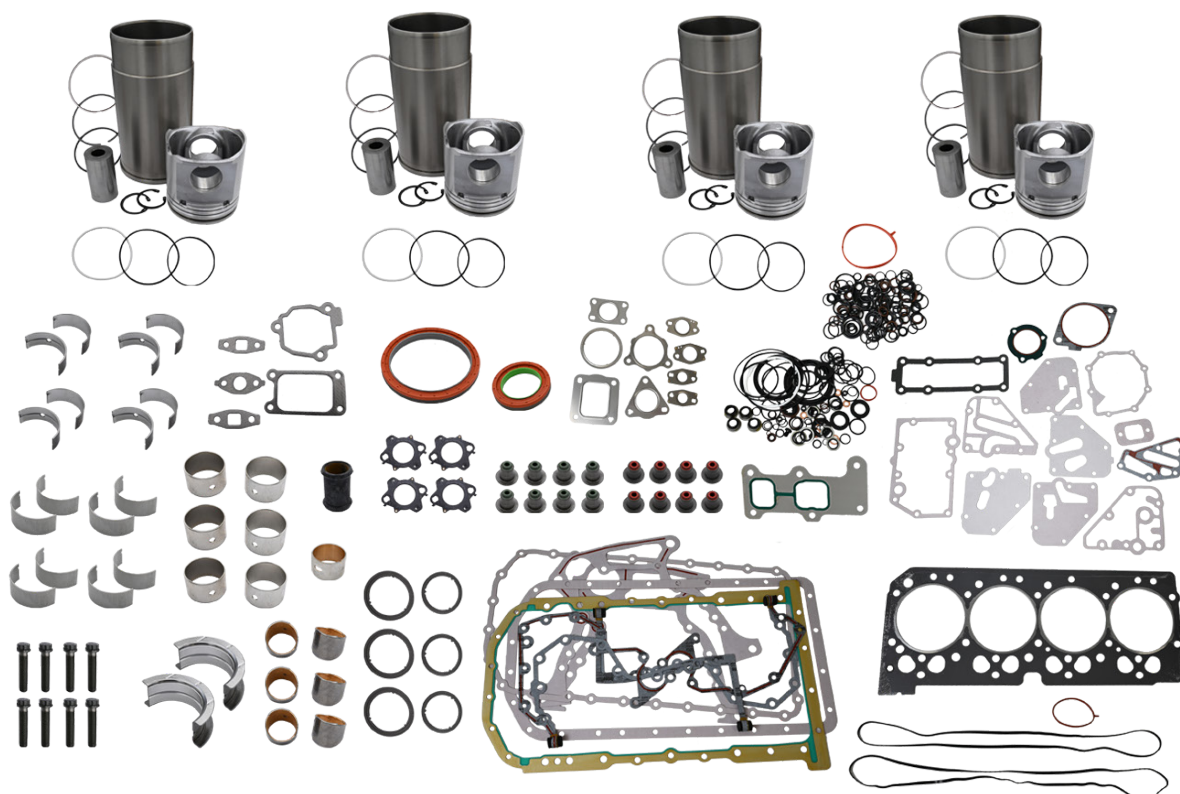


OE	Quantity	Description
DZ109765	4	Kit, Cyl 4045 / 6068 Tier 4 Final
RE65165	4	Brg, Main Std
RE65168	1	Brg, Main Thrust Std
RE65908	4	Brg, Con Rod Std
R114082	4	Bushing, Con Rod Pt 41 Mm
DZ108462	1	Gasket, O/H Set, W/Crank Seals, 4045 Tier 4
R115299	6	Bushing, Balancer Shaft
R119874	1	Bushing, Camshaft
R501124	8	Capscrew, Con Rod, P.T.
RE536919	8	Seal, Valve Stem, Intake
RE541360	8	Seal, Valve Stem, Exhaust

JOHN DEERE POWERTECH 4045 T/H TIER 4 | 4 CYLINDER

NEW

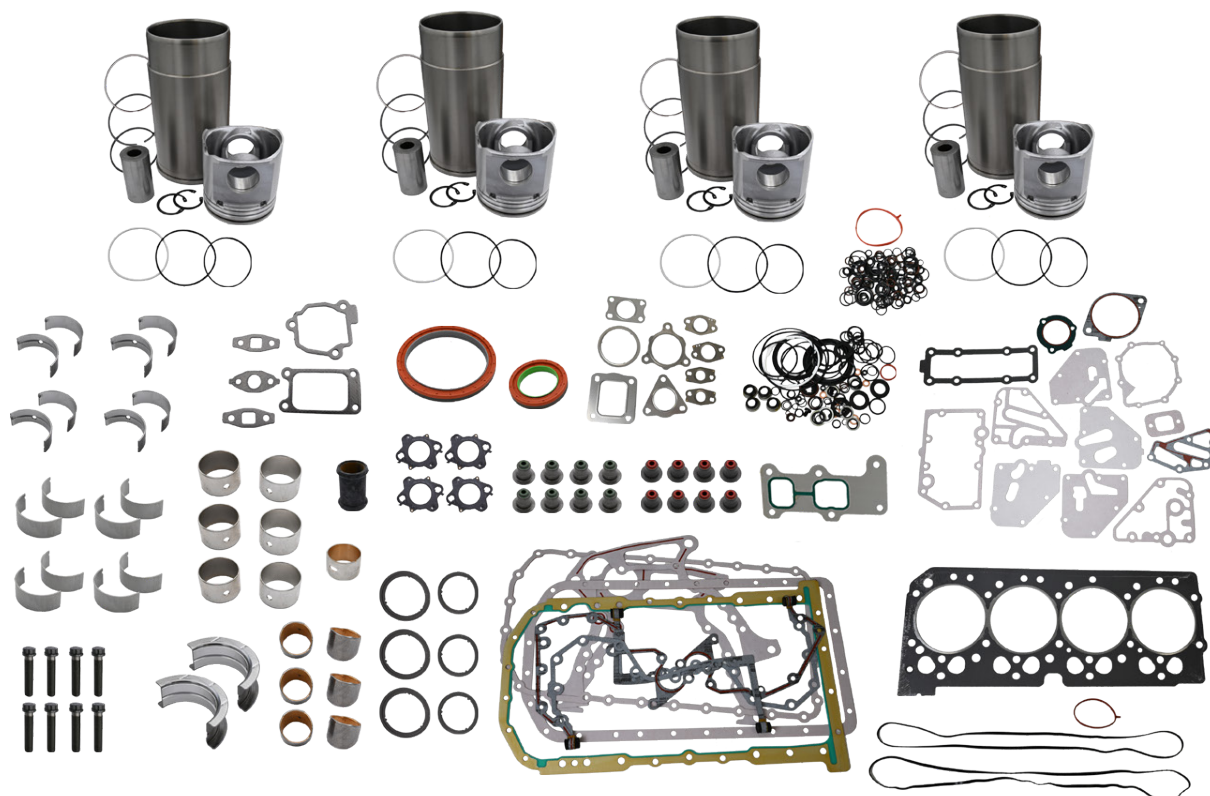
500756



OE	Quantity	Description
DZ109764	4	Kit, Cyl 4045 / 6068 Tier 4 Final
RE65165	4	Brg, Main Std
RE65168	1	Brg, Main Thrust Std
RE65908	4	Brg, Con Rod Std
DZ108462	1	Gasket, O/H Set, W/Crank Seals, 4045 Tier 4
R114082	4	Bushing, Con Rod Pt 41 Mm
R119874	1	Bushing, Camshaft
R115299	6	Bushing, Balancer Shaft
R501124	8	Capscrew, Con Rod
RE536919	8	Seal, Valve Stem, Intake
RE541360	8	Seal, Valve Stem, Exhaust

JOHN DEERE POWERTECH 4045 T/H TIER 4 | 4 CYLINDER

500757

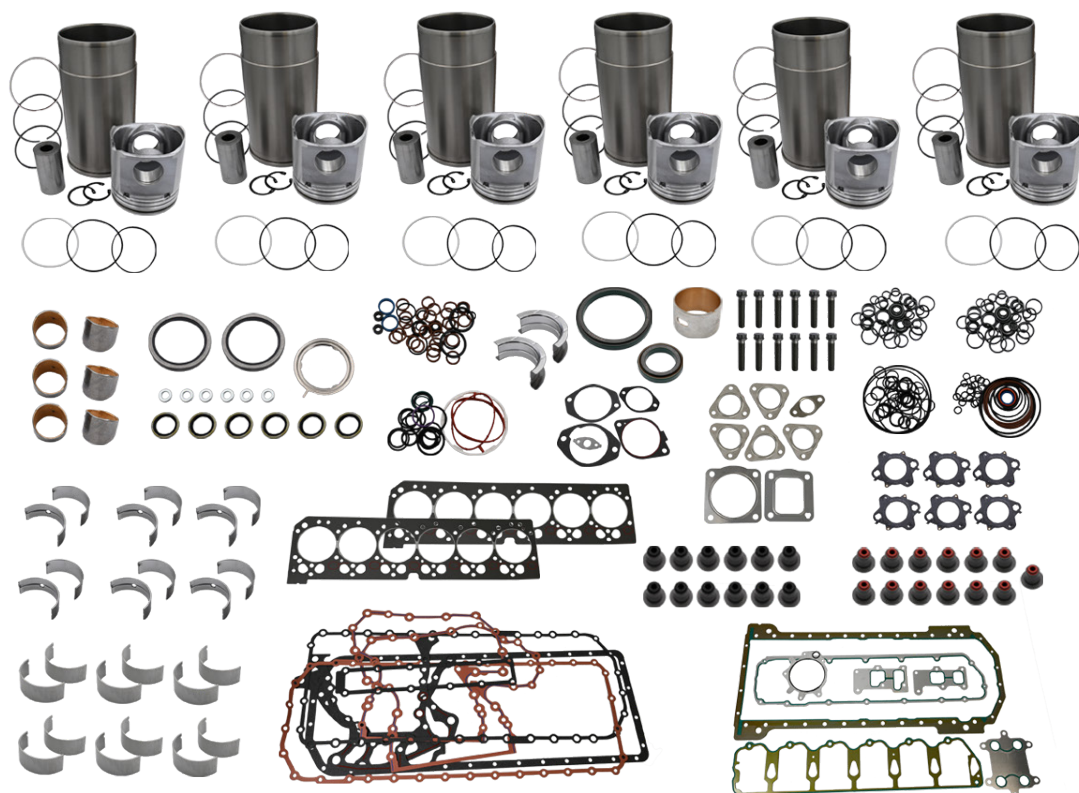


OE	Quantity	Description
DZ109758	4	Kit, Cyl 4045 / 6068 Tier 4 Final
RE65165	4	Brg, Main Std
RE65168	1	Brg, Main Thrust Std
RE65908	4	Brg, Con Rod Std
DZ108462	1	Gasket, O/H Set, W/Crank Seals, 4045 Tier 4
R114082	4	Bushing, Con Rod Pt 41 Mm
R115299	6	Bushing, Balancer Shaft
R119874	1	Bushing, Camshaft
R501124	8	Capscrew, Con Rod
RE536919	8	Seal, Valve Stem, Intake
RE541360	8	Seal, Valve Stem, Exhaust

JOHN DEERE POWERTECH 6068 TIER 4 | 6 CYLINDER

NEW

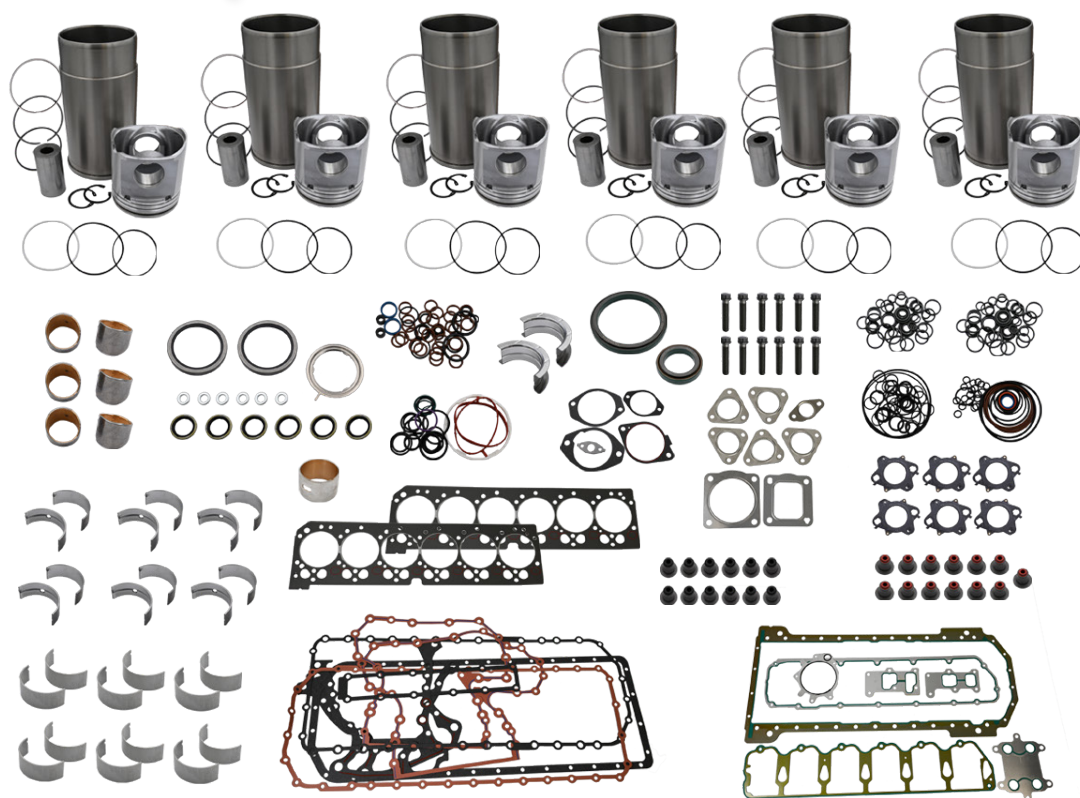
500752



OE	Quantity	Description
DZ109764	6	Kit, Cyl 4045 / 6068 Tier 4 Final
RE65165	6	Brg, Main Std
RE65168	1	Brg, Main Thrust Std
RE65908	6	Brg, Con Rod Std
RE505515	1	Seal, Crankshaft Front
RE44574	1	Seal, Oil Rear
DZ109995	1	Gasket, O/H Set, 6068 Tier 4
R114082	6	Bushing, Con Rod Pt 41Mm
R119874	1	Bushing, Camshaft
R501124	12	Capscrew, Con Rod
RE536919	12	Seal, Valve Stem, Intake
RE541360	12	Seal, Valve Stem, Exhaust

JOHN DEERE POWERTECH 4045 T/H TIER 4 | 4 CYLINDER

500753

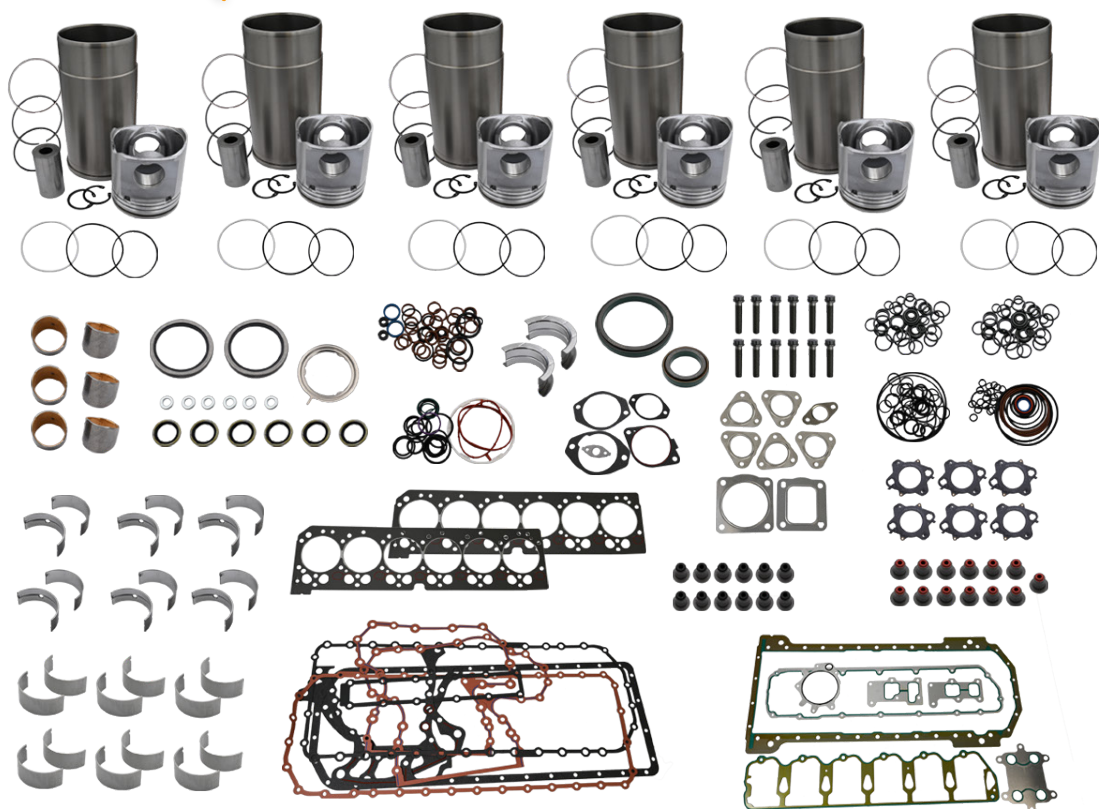


OE	Quantity	Description
DZ109764	6	Kit, Cyl 4045 / 6068 Tier 4 Final
RE65165	6	Brg, Main Std
RE65168	1	Brg, Main Thrust Std
RE65908	6	Brg, Con Rod Std
RE505515	1	Seal, Crankshaft Front
RE44574	1	Seal, Oil Rear
DZ109995	1	Gasket, O/H Set, 6068 Tier 4
R114082	6	Bushing, Con Rod Pt 41Mm
R119874	1	Bushing, Camshaft
R501124	12	Capscrew, Con Rod
RE536919	12	Seal, Valve Stem, Intake
RE541360	12	Seal, Valve Stem, Exhaust

JOHN DEERE POWERTECH 6068 TIER 4 | 6 CYLINDER

NEW

500754



OE	Quantity	Description
DZ109764	6	Kit, Cyl 4045 / 6068 Tier 4 Final
RE65165	6	Brg, Main Std
RE65168	1	Brg, Main Thrust Std
RE65908	6	Brg, Con Rod Std
RE505515	1	Seal, Crankshaft Front
RE44574	1	Seal, Oil Rear
DZ109995	1	Gasket, O/H Set, 6068 Tier 4
R114082	6	Bushing, Con Rod Pt 41Mm
R119874	1	Bushing, Camshaft
R501124	12	Capscrew, Con Rod
RE536919	12	Seal, Valve Stem, Intake
RE541360	12	Seal, Valve Stem, Exhaust



QTP DEVELOPED

TORSION DAMPER

56604 | OE Ref: AL201672

John Deere 6M 6R Series



POWER BEYOND VALVE

57666 | OE Ref: AL231707

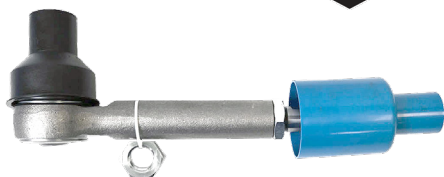
John Deere 6M 6 R Series



FRONT AXLE PLANETARY GEAR & BEARING KIT

500926 | OE Ref: AL227338

John Deere 6M 6R Series



TRACK ROD ASSEMBLY

500894 | OE Ref: AL222370

John Deere 6M 6R Series



TURBOCHARGER

500875 | OE Ref: DZ127353

John Deere 6M 6R 6D Series



LEVELLING BOX ASSEMBLY

57753 | OE Ref: R107759

John Deere 8000 8010 Series



UNIVERSAL JOINT ASSEMBLY

500864 | OE Ref: AL110349

John Deere 6000 6010 6020 Series



UNIVERSAL JOINT ASSEMBLY

500865 | OE Ref: AL81841

John Deere 6010 6020
7010 7020 Series



UNIVERSAL JOINT ASSEMBLY

500866 | OE Ref: AL63619

John Deere 41 51 55 Series



LIFT ARM SWAY BLOCK LH

500692 | OE Ref: L00865

John Deere 6000 6010 6020 Series



LIFT ARM SWAY BLOCK RH

500693 | OE Ref: L100866

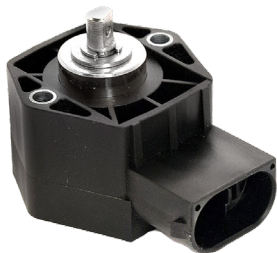
John Deere 6000 6010 6020 Series



INPUT SHAFT LOCK NUT

500377 | OE Ref: R271123

John Deere 5E 5M 5R
5003 5004 5005 5010 Series



POSITION SENSOR

65014 | OE Ref: 34253500

Deutz Agrottron Series



BRAKE SHOE

900012 | OE Ref: 04384746

Deutz D 06 07 Series



BRAKE MASTER CYLINDER

54887 | OE Ref: 04386680

Deutz Agrostar Agrostar
Freisicht Series



INNER AIR FILTER

900160 | OE Ref: 2243522

Deutz Agrostar DX3 DX4 DX6 Series



FUEL FILTER

900158 | OE Ref: 0.036.2705.0

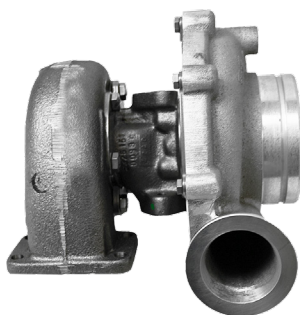
Deutz 5G Series



FUEL FILTER

900159 | OE Ref: 0.036.2704.0

Deutz 5G Series



TURBOCHARGER

680375 | OE Ref: 03047687

Fendt 800 700 Vario Series



GEAR LEVER KNOB

680367 | OE Ref: H178100090070

Fendt Farmer Favorit Series



HOSE INTERCOOLER

56653 | OE Ref: 743200191021

Fendt Vario 700 Series



AIR FILTER KIT

680331 | OE Ref: P606121

Fendt Deutz Valtra Series



BRAKE SHOE

680321 | OE Ref: H205100150010

Fendt Farmer Vario Favorit Series



BRAKE SHOE

680322 | OE Ref: 246100150300

Fendt Farmer Series

MASSEY FERGUSON



PTO GUARD

600203 | OE Ref: 3801418M91

Massey Ferguson 4200 4300 Series



SENSOR RAIL PRESSURE

64784 | OE Ref: V837079433

Massey Ferguson 6600 7600
7700 8700 Series



SENSOR RAIL PRESSURE

64555 | OE Ref: 4226583M1

Massey Ferguson 5400 6400 7400 Series



FAN BELT WITH AIRCON

600229 | OE Ref: 4350583M2

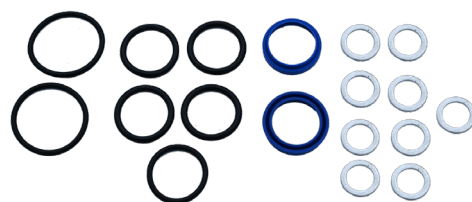
Massey Ferguson 5700
6600 7600 Series



FAN BELT WITH AIRCON

600230 | OE Ref: 4350583M2

Massey Ferguson 5700
6600 7600 Series



SEAL KIT GOR POWER STEERING RAM

100102

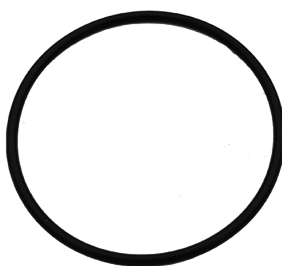
Massey Ferguson 35 100 200 Series



THERMOSTAT

600260 | OE Ref: 3637649M1

Massey Ferguson 64 66 77 Series



THERMOSTAT HOUSING GASKET

400576 | OE Ref: 4225843M1

Massey Ferguson 3400
5400 6400 8900 Series



RAIL PRESSURE RELIEF VALVE

67535 | OE Ref: 5801474163

Massey Ferguson 5600 5700 6700
4700 4600 3200-3300 5S 1004 Series



FUEL PRESSURE CONTROL VALVE

56742 | OE Ref: V837079834

Massey Ferguson 6700
7700 8700 Series



FUEL PRESSURE SENSOR

56741 | OE Ref: V837079833

Massey Ferguson 6700
7700 8700 Series



FUEL PRESSURE CONTROL VALVE

600165 | OE Ref: V837071191

Massey Ferguson 64 74 84 86 Series



FUEL FILTER

400397 | OE Ref: 5801471972

New Holland T6 T7 Series



FUEL INJECTOR

400398 | OE Ref: 2855135

New Holland T6 T7 T7000 Series



HYDRAULIC LIFT CYLINDER

400145 | OE Ref: 47134496

Case Maxxum MXU Series



FUEL INJECTION PIPE

400395 | OE Ref: 2830386

New Holland T6 T7
T6000 T7000 Series



FUEL LINE PIPE

400396 | OE Ref: 2830389

New Holland T6 T7
T6000 T7000 Series



IDLER BELT PULLEY

400486 | OE Ref: 2852245

Case Maxxum MXU Series



CRANKSHAFT PULLEY

400400 | OE Ref: 5802063393

New Holland T5 T6 T7 T6000 Series



AIRCON FAN BELT

400577 | OE Ref: 87399980

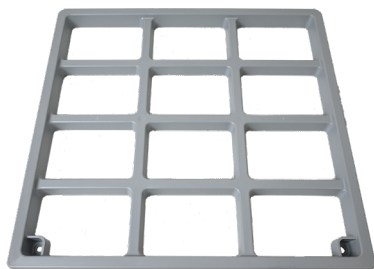
Case Farmall New Holland
T4 T4000 T5000 Series



WIPER MOTOR

400582 | OE Ref: 5093388

Case Farmall JX Series
New Holland T4 TD Series



FRONT GRILL

400605 | OE Ref: 3121672R1

Case 84 85 Series



STEERING SENSOR SWITCH

400615 | OE Ref: 87627614

Case MXM Maxxum Puma Series
New Holland T6 T6000 TM Series



EXHAUST PIPE

400618 | OE Ref: 47658236

Case Farmall Series
Ford New Holland T5 Series

ENGINE PARTS 20 PETROL / TVO



62662
Plug Leads c/w Closed
Screw Connections



51941
Acorn Cap for Distributor
Cap Pack of 5
Short



51942
Acorn Cap for Coil
TE20 TVO 20 Long



62515
Coil 12V Old Type TE 20 TVO 20
Screw In Type



63019
Coil 12V New Push in Connection
Type TE20



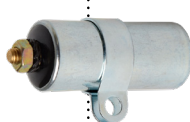
62513
Coil 6V Old Type TE 20 TVO 20
Screw In Type



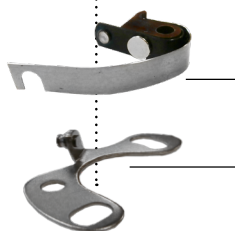
61342
Distributor Cap 20
TVO



61524
Distributor Cap 20
TVO Rotor



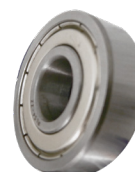
61343
Condenser 20
TVO



61344
Points 20 TVO



61345
Spark Plug 20 TVO 35
4 Cylinder



63306
Bearing Distributor
20 Late Type



63307
Bearing Distributor
20 Early Type



IGNITION KIT
63338 | OE Ref: 5093388
Massey Ferguson TE Series



**ELECTRONIC DISTRIBUTOR
POSITIVE EARTH**
67337 | OE Ref: LUCAS D3A4
Massey Ferguson TEA20 TED20
FE35 TVO TE & FE35 Series



**ELECTRONIC DISTRIBUTOR
NEGATIVE EARTH**
67337NE | OE Ref: Lucas D3A4
Massey Ferguson TE FE35 Series